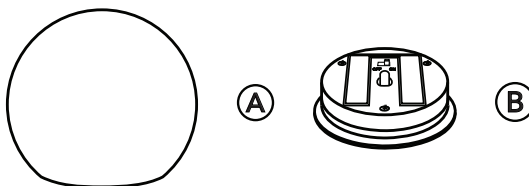


INSTRUCTIONS

ART GLASS SOLAR GAZING BALL

PARTS:

- A. Glass Orb – 1 pc
- B. Solar Panel – 1 pc



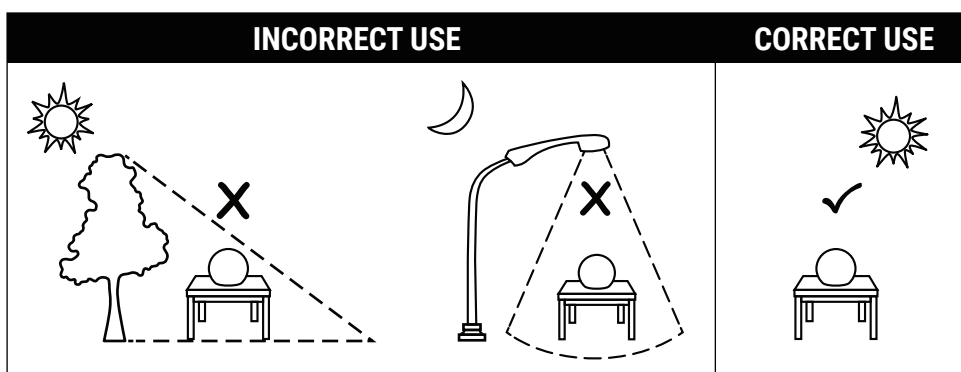
TO USE THE GLASS SOLAR LIGHT :

- After removing from the box, gently lift the solar panel from the glass base, peel off any protective material, and place in direct sunlight (away from any water source such as sprinklers) for 8-10 hours. This will ensure the battery will fully charge prior to initial use.
- Move the control switch to the "ON" position. This will enable the solar function to automatically illuminate in the dark.
- Place solar panel back into art glass base, making sure the panel is carefully secure.
- A fully charged battery will illuminate for approximately 3-5 hours at a time under optimal conditions. Actual results may vary.

DO NOT :

- Do not place the glass solar light under a lamp, or other lighting as this prevents it from illuminating at night.
- Do not place the glass solar light in shaded areas caused by trees, buildings, or other sources. The battery needs direct sunlight to charge after use.
- Do not leave out in extreme weather, including snow, frost, and rain.

FOR OUTDOOR DECORATIVE PURPOSES ONLY.



TO REPLACE THE BATTERY :

- Remove the screws and open the battery compartment as shown below. Do not remove the wire connecting the solar panel to the battery.
- Remove the battery and replace it with a NEW Ni-MH AA 600mAh 1.2V rechargeable battery. Be sure to insert the battery matching the (-) and (+) in the correct direction.
- Screw the panel in place aligning the screws into their coordinating holes. The panel should be securely fastened before turning on.
- Dispose of old battery in accordance with local regulations and guidelines.
- Rechargeable batteries may last up to 12 months. Actual results may vary.

